

- |  |   |  |                                     |  |                                     |
|--|---|--|-------------------------------------|--|-------------------------------------|
|  | Multifunctioneel = 686m <sup>2</sup>      |  | Mono-Verian = 42m <sup>2</sup>      |  | Mono-Kompas = 465m <sup>2</sup>     |
|  | Semi-Multifunctioneel = 185m <sup>2</sup> |  | Mono-JOED = 70m <sup>2</sup>        |  | Wijkraad = 77m <sup>2</sup>         |
|  | Mono-ACCRES = 38m <sup>2</sup>            |  | JOED/Verian = 145m <sup>2</sup>     |  | Atrium = 477m <sup>2</sup>          |
|  | Mono-CODA = 489m <sup>2</sup>             |  | Mono-Sebastian = 193m <sup>2</sup>  |  | Techniekruimten = 76m <sup>2</sup>  |
|  | Mono-Kinderopvang = 773m <sup>2</sup>     |  | Mono-Pestalozzi = 174m <sup>2</sup> |  | Verkeersruimten = 490m <sup>2</sup> |

Vleugelschool Zuid en Park

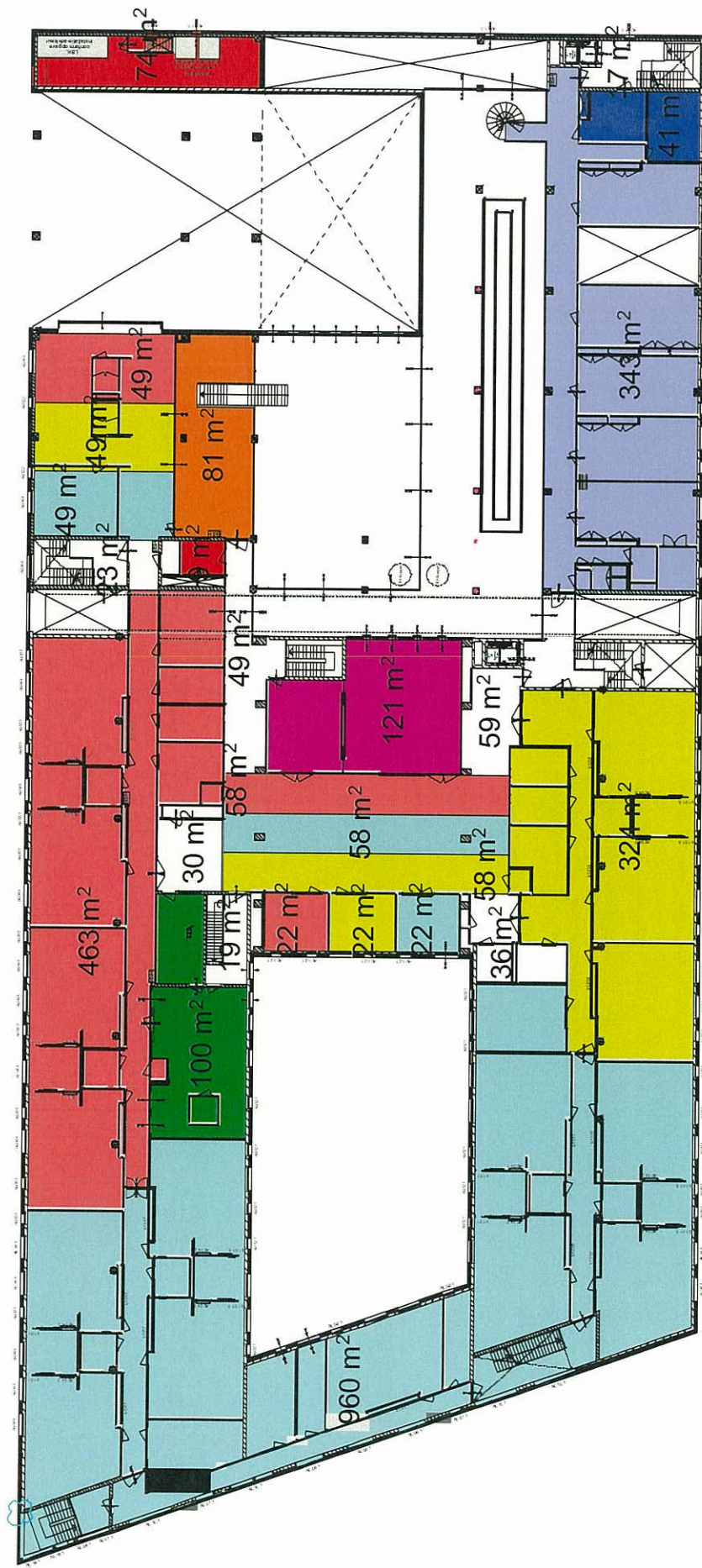
Bestekleuring  
Schaal 1:300  
Datum xx-xx-2006













**612 XX**

Bruto Vierkante meters per gebruiker  
(geleend op verzoek en volgens opgave van ACCRES)

Begane grond  
FRENCKEN | SCHOLL  
ARCHITECTEN

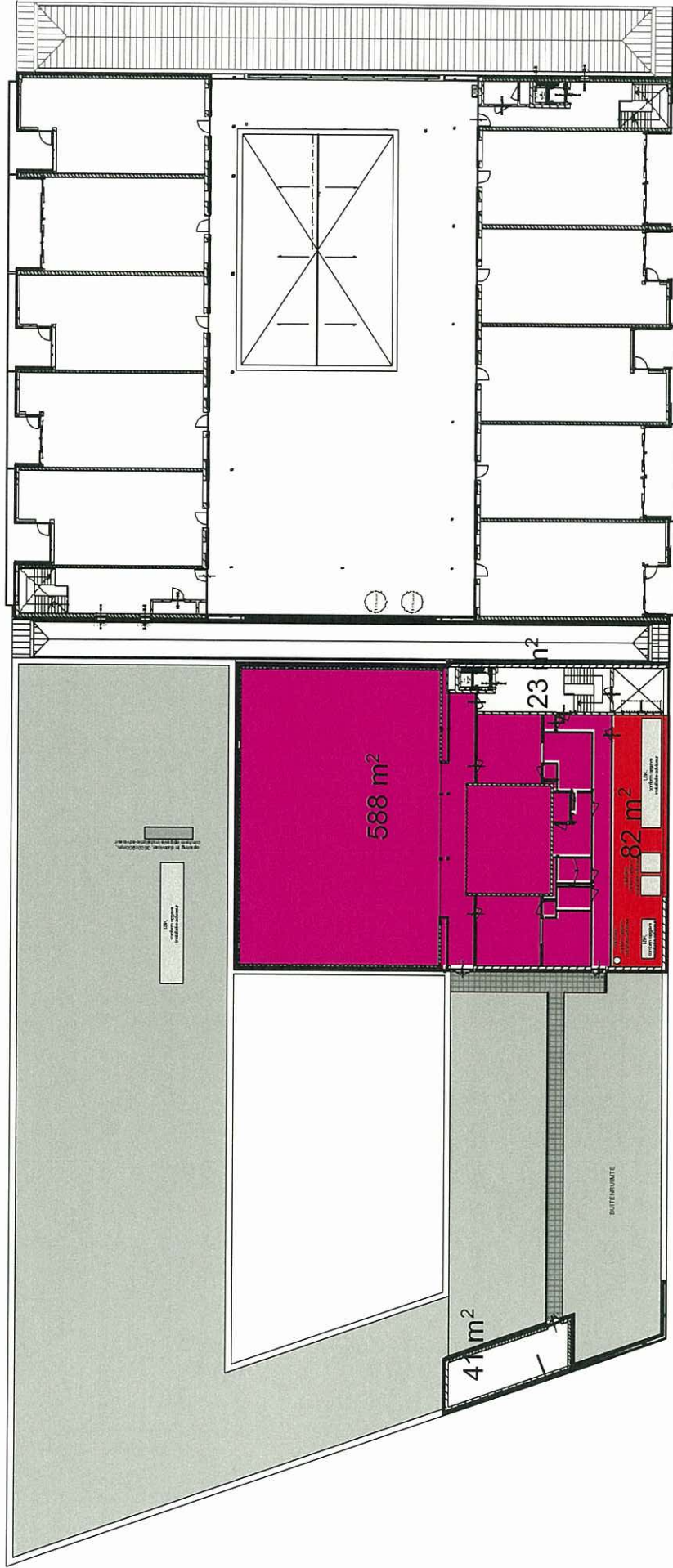
FRENCKEN | SCHOLL  
ARCHITECTEN



	Multifunctioneel = 343m <sup>2</sup>		Techniekr ruimten = 83m <sup>2</sup>
	Semi-Multifunctioneel = 121m <sup>2</sup>		Verkeersruimten = 233m <sup>2</sup>
	Mono-ACCRES = 41m <sup>2</sup>		Mono-Kinderopvang = 100m <sup>2</sup>
	Mono-CODA = 81m <sup>2</sup>		JOED
	Mono-Verian		Mono-Kompas = 1.089m <sup>2</sup>
			Mono-Sebastiaan = 453m <sup>2</sup>
			Mono-Pestalozzi = 592m <sup>2</sup>

Vleugelschool Zuid en Park  
 Bestektekening  
 Schaal 1:300  
 Datum xx-xx-2006  
 Vierkante meters per gebruiker  
 (gebaseerd op verzzoek en volgende opgave van ACCRES)  
 Eerste verdieping  
VERBODEN TOEGANG TOEGANG VOOR ALLENIJK DE VERBODEN TOEGANG TOEGANG VOOR ALLENIJK DE VERBODEN TOEGANG TOEGANG VOOR ALLENIJK DE

612 XX



- Multifunctioneel
- Semi-Multifunctioneel = 588m2
- Mono-ACCRES
- Mono-CODA
- Mono-Verian

- Mono-Kinderopvang
- JOED
- Mono-Kompas
- Mono-Sebastiaan
- Mono-Pestalozzi

- Techniekr ruimten = 82m2
- Verkeersruimten = 64m2

Vleugelschool Zuid en Park

Bestektekening  
 Schaal 1:300  
 Datum xx-xx-2006

**612 XX**  
 Vierkante meters per gebruiker  
 (gebied op verzoek en volgens opgave van ACCRES)  
 Tweede verdieping

VERBODEN TOEGANG TOEGANGSBEHEERders  
 020 487 4874  
 www.frencken-scholl.nl